

Kuwait | August 18, 2021

On Wednesday, overall market sentiment was mixed, as two out of four major indices ended in the green while the other two ended lower. Premier Market Index advanced 0.74% to close at 7,274.54 points, and All-Share Index ended 0.52% higher at 6,651.39 points. On the contrary, Main Market Index dropped 0.17% to end at 5,417.73 points, and BK Main 50 Index slipped 0.08% to settle at 5,701.49 points.

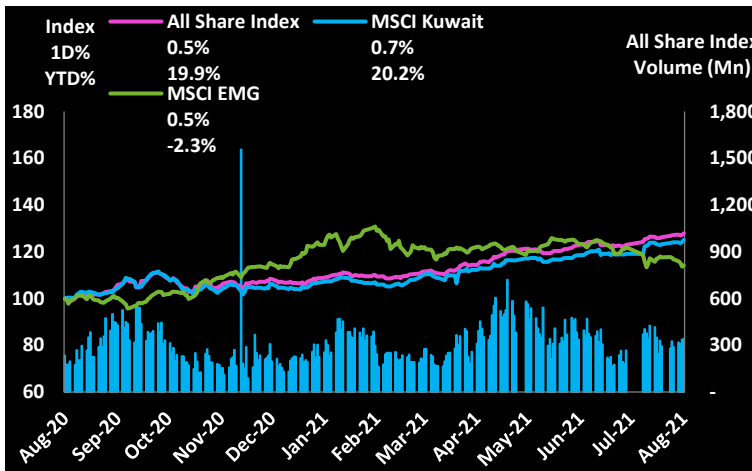
In the Premier Market Index, AUB was the top percentage gainer with a gain of 2.67%, followed by ALQURAIN with an increase of 1.63%. On the other hand, ALAFCO was the top percentage loser with a loss of 1.72%, followed by GBK with a decline of 0.83%. The total value traded in the Premier Market Index was KWD 34.2 mln, and the volume was 87.3 mln shares. In the Main Market Index, GFH, which fell 7.63%, witnessed the highest traded value of KWD 5.6 mln as well as the highest volume of 77 mln shares. MAZAYA, which declined 2.70%, recorded the second-highest traded value of KWD 3.4 mln and also the second-highest volume in the index of 38.6 mln shares.

Economic / Company News

- [Kuwait's July trade surplus with Japan more than tripled](#)
- [ALIMTIAZ - Transcript of Analysts Conference](#)
- [KRE - Transcript of Analysts Conference](#)
- [AGHC - A subsidiary co renews a banking facility contract with a local bank](#)
- [MASSALEH - Agrees to purchase a property in Mahboula area with a value of 12.5 mln KD](#)
- [CGC - Awarding a tender for Kuwait Oil Co worth 3.6 mln KD](#)
- [NOOR - Capital increase disclosure](#)

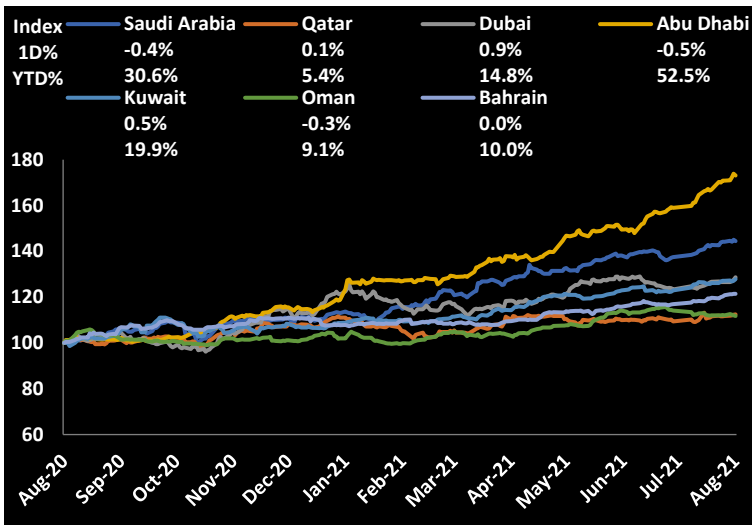
Source: Boursa Kuwait

All Share Index (1-Year Performance)



Value Traded 58.71 mln **Compared to 1Y Daily Avg** 8.3%

GCC Bourses



Source: Publicly available market data

Major Global Indices

Indices	Last Price	1D%	WTD%	MTD%	YTD%
DJ Industrial	34,960.69	-1.1	-1.6	0.1	14.2
S&P 500	4,400.27	-1.1	-1.5	0.1	17.2
Nikkei225	27,585.91	0.6	-1.4	1.1	0.5
Hang Seng	25,867.01	0.5	-2.0	-0.4	-5.0
FTSE 100	7,169.32	-0.2	-0.7	1.9	11.0
CAC 40	6,770.11	-0.7	-1.8	2.4	22.0
MSCI World	3,078.01	-0.7	-1.5	0.3	14.4
MSCI Emg	1,261.60	0.5	-1.5	-1.3	-2.3

Source : Publicly available market data

Major Commodities / Currencies

	Last Price	1D%	WTD%	MTD%	YTD%
Gold (\$/MT Ounce)	1,784.40	-0.2	0.3	-1.8	-6.0
Silver (\$/Troy Ounce)	23.47	-1.0	-1.3	-8.1	-11.4
Brent Crude Oil (\$/BBL)	68.23	-1.2	-3.3	-10.6	31.5
OPEC Oil (\$/BBL)	69.40	-0.4	-2.7	-6.7	36.7
EUR/USD	0.854	0.0	0.7	1.4	4.8
USD Index	93.14	0.0	0.7	1.0	3.5
JPY	109.81	0.2	0.2	0.1	6.3

Source : Publicly available market data

Market Calendar

Date	Day	Company Name	Event
19-Aug	Thursday	SHOOTING	BoD Meeting
22-Aug	Sunday	BPCC	BoD Meeting
25-Aug	Wednesday	ABAR	AGM
29-Aug	Sunday	ALMAL	AGM

Source: Boursa Kuwait

Daily Top Gainers

Stock (Fils)	Last Price	52 Week High	Low	1D%	YTD%	Value (KD'000)
TAMINV	282.0	371.0	200.0	8.1	-9.0	129.0
KSHC	36.2	39.6	24.6	7.1	13.1	0.01
AAYAN	155.0	205.0	48.4	5.4	68.5	1,662.5
ENERGYH	41.5	46.5	17.6	5.1	48.2	1.2
ALTIJARIA	128.0	129.0	90.6	4.9	11.3	1,783.8

Daily Top Losers

Stock (Fils)	Last Price	52 Week High	Low	1D%	YTD%	Value (KD'000)
GFH	70.2	77.0	41.0	-7.6	46.3	5,605.7
JIYAD	50.0	72.6	32.0	-5.5	13.6	1.0
MASHAER	63.6	82.5	51.5	-4.9	7.8	0.3
KUWAITRE	339.0	527.0	185.0	-4.8	62.2	0.2
ALMANAR	58.7	74.4	39.9	-4.6	17.4	2.6

Daily Volume Leaders

Stock (Fils)	Last Price	1D%	YTD%	Volume ('000)
GFH	70.2	-7.6	46.3	76,979
MAZAYA	86.5	-2.7	51.8	38,588
AUB	269.0	2.7	18.5	19,440
ALTIJARIA	128.0	4.9	11.3	14,131
NRE	212.0	0.5	182.7	13,517

Daily Value Leaders

Stock (Fils)	Last Price	1D%	YTD%	Value (KD'000)
KFH	799.0	1.1	18.0	8,021
GFH	70.2	-7.6	46.3	5,606
AUB	269.0	2.7	18.5	5,181
NBK	900.0	0.7	7.1	4,552
MAZAYA	86.5	-2.7	51.8	3,351

Source: Boursa Kuwait (for all tables and charts on page 2)

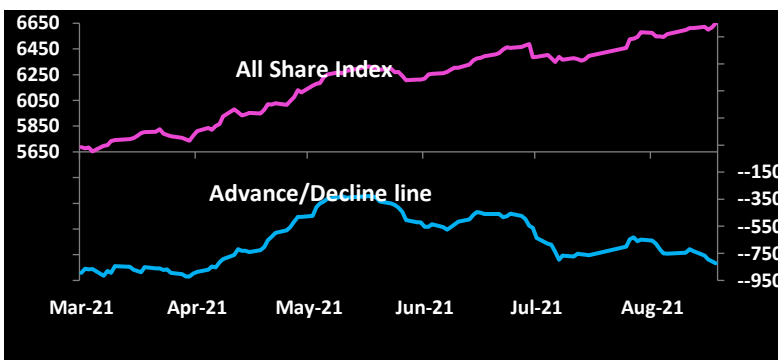
Stocks Trading Near 52 Weeks High

Stock (Fils)	Last Price	52 W High	% Below 52 W High	Value (KD'000)
KFH	799.0	799.0	0.0	8,021.0
NBK	900.0	900.0	0.0	4,551.7
ALMUTAHED	304.0	305.0	-0.3	45.1
AUB	269.0	270.0	-0.4	5,180.6
ALTIJARIA	128.0	129.0	-0.8	1,783.8

Stocks Trading Near 52 Weeks Low

Stock (Fils)	Last Price	52 W Low	% Above 52 W Low	Value (KD'000)
GFC	38.6	38.5	0.3	0.1
AZNOULA	225.0	220.0	2.3	238.9
KPROJ	153.0	147.0	4.1	348.9
NAPESCO	800.0	764.0	4.7	2.4
STC	861.0	822.0	4.7	163.7

Market Breadth

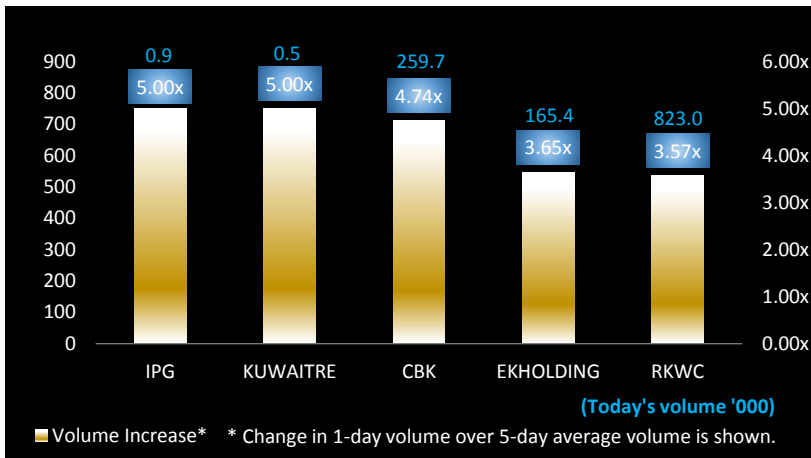


Advancing Volume	164.2 Mln	Advancing Shares	71
Declining Volume	153.2 Mln	Declining Shares	51
Unchanged Volume	22.5 Mln	Unchanged Shares	20

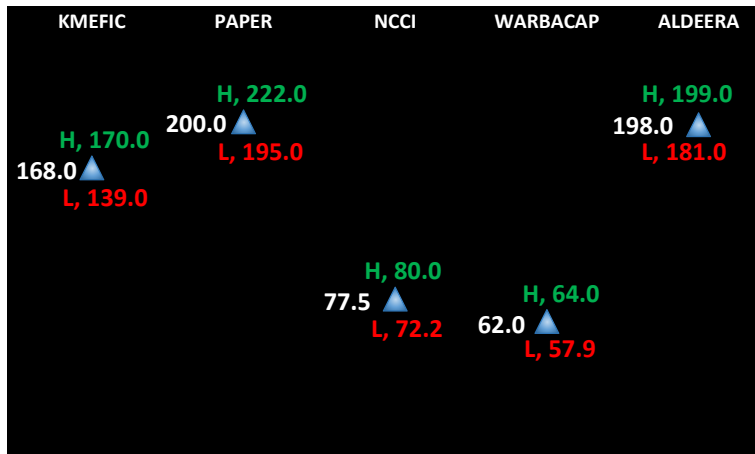
New High / Low

1D	1W
5	8
1	2

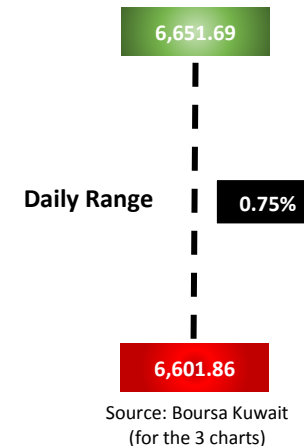
Volume Trending Stocks



Stocks with Highest Daily Price Range (Fils)



All Share Index



Sectoral Valuation Multiplies

Sector/Indices	Market Cap (KD Mln)	Weight (%)	P/E (TTM)*#	P/BV (TTM)*
All Share Index	39,005.76	100.00%	23.4x	1.7x
Premier Market	29,697.17	76.14%	26.4x	2.1x
Main Market	9,308.59	23.86%	14.9x	1.0x
BANKS	22,535.85	57.78%	31.6x	2.2x
FINANCIAL SERVICES	3,515.73	9.01%	9.2x	1.1x
REAL ESTATE	2,563.02	6.57%	34.4x	1.0x
INSURANCE	498.34	1.28%	9.7x	1.0x
INDUSTRIALS	4,118.38	10.56%	23.9x	1.3x
BASIC MATERIALS	958.44	2.46%	26.1x	1.4x
CONSUMER STAPLES	227.65	0.58%	16.8x	1.5x
TELECOMMUNICATIONS	3,330.01	8.54%	15.2x	1.8x
ENERGY	287.45	0.74%	17.3x	1.1x
TECHNOLOGY	10.50	0.03%	25.1x	0.9x
HEALTH CARE	164.36	0.42%	35.4x	2.6x
CONSUMER DISCRETIONARY	548.52	1.41%	20.3x	1.6x
UTILITIES	247.50	0.63%	20.1x	3.5x

Source : Boursa Kuwait and KIC Research *Based on data as on TTM 31.3.2021 # Market cap weighted, excluding companies with negative earnings

Sectoral Performance

Sectoral Indices	Last Price	1D%	WTD%	MTD%	YTD%	Advances / Declines Ratio	Volume Traded / 5-day Avg Vol
All Share Index	6,651.39	0.5	0.6	1.1	19.9	1.39	1.07
Premier Market	7,274.54	0.7	0.9	1.5	20.2	1.71	1.06
Main Market	5,417.73	-0.2	-0.4	-0.4	19.0	1.34	1.07
BANKS	1,525.30	0.8	1.2	1.6	20.8	2.50	1.10
FINANCIAL SERVICES	1,234.92	-0.2	-1.1	1.5	32.8	1.57	1.17
REAL ESTATE	1,218.21	0.4	-0.7	0.7	27.9	1.45	0.94
INSURANCE	1,449.93	0.2	2.7	3.2	25.4	2.00	0.25
INDUSTRIALS	1,159.09	0.3	-0.4	0.0	30.1	0.91	0.83
BASIC MATERIALS	1,074.74	0.5	1.9	-0.2	19.6	0.50	1.42
CONSUMER STAPLES	747.14	0.8	-0.1	-3.2	-8.7	N/M	0.77
TELECOMMUNICATIONS	1,086.04	0.2	0.2	-0.4	-1.4	3.00	1.78
ENERGY	1,379.73	0.6	-1.1	-2.6	8.0	N/M	1.43
TECHNOLOGY	763.88	4.5	4.9	1.0	52.0	N/M	2.08
HEALTH CARE	807.12	-0.7	0.0	0.8	-2.4	0.00	0.14
CONSUMER DISCRETIONARY	1,016.55	-0.2	-0.9	-1.8	36.2	0.67	0.79
UTILITIES	592.11	-0.4	-0.4	-0.9	-18.8	0.00	1.05

Source : Boursa Kuwait

Kuwait Investment Co. (K.S.C.P)

5th Floor, Souk Al-Manakh, Mubarak Al-Kabir Street, Sharq, Kuwait

P.O. Box 1005, Safat 13011, Kuwait

Tel: (+965) 1888852 (+965) 22967000

Email: research@kic.com.kw

Websites: www.kic.com.kw / www.kictrade.com



Disclaimer:

This document and material contained herewith have been produced, compiled, and issued by Kuwait Investment Company- KIC (K.S.C.P.). Kuwait Investment Company is a public shareholding company, incorporated and domiciled in the State of Kuwait, and is regulated by the Central Bank of Kuwait (CBK) and Capital Markets Authority (CMA) as an investment and finance company. The Company has obtained the information used in this document from sources it believes to be reliable, but the issuer does not guarantee, neither its accuracy nor completeness, nor provides an independent verification of the material contained therein. KIC may, from time to time to the extent permitted by law, participate or invest in other financing transactions with the issuers of the securities, perform services for or solicit business from such issuer and/or have a position or effect transactions in the securities or options thereof. KIC may, to extent permitted by the applicable Kuwaiti Law or other applicable laws and regulations, effect transactions in the securities before this material is published to recipients. The opinions and estimates expressed herein are those of the issuer and subject to change at any time without any prior notice. Accordingly, no representation or warranty, expressed or implied, is made as to and no reliance should be placed on the fairness, accuracy, completeness or correctness of the information and opinions contained in this document. KIC accepts no liability for any loss arising from the use of this document or its contents or otherwise arising in connection therewith. This document should not be relied upon or used in substitution for the exercise of sound judgment. KIC shall have no responsibility or liability whatsoever in respect of any inaccuracy in or omission from this or any other document prepared by KIC for, or sent by KIC to any entity, and any such entity shall be responsible for conducting its own scrutiny, investigation, and analysis of the information contained or referred to in this document and of evaluating the merits and risks involved in the securities forming the subject matter of this or other such document.

Opinions and estimates constitute KIC's judgment and are subject to change without prior notice. Past performance is not a reliable indicator of future results. This document does not constitute an offer or invitation to subscribe for or purchase any securities, and neither this document nor anything contained herein shall form the basis of any contract or commitment whatsoever. This document is not an offer to sell or a solicitation to buy any securities. It is being furnished to the reader solely for his/her information and may not be redistributed inside Kuwait or by any jurisdiction outside Kuwait where this action is restricted by law. Entities who receive this report should make themselves aware of and adhere to any such restrictions. By accepting receipt of this report, the reader agrees to be bound by the foregoing limitations.